

The Sea Grant American Lobster Initiative

Virtual Meeting

February 10, 2022

Amalia Harrington, PhD

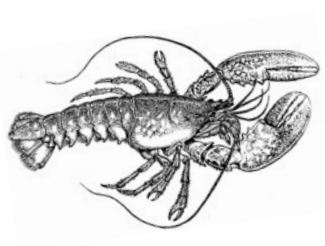
Maine Sea Grant at the University of Maine

Northeast Regional Lobster Extension Project Coordinator

Email: amalia.harrington@maine.edu

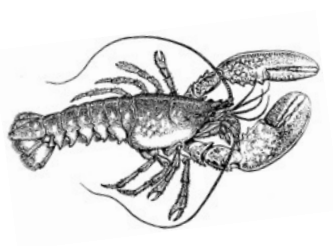


American Lobster Initiative



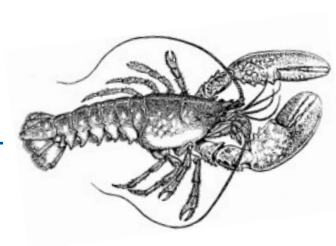
Agenda

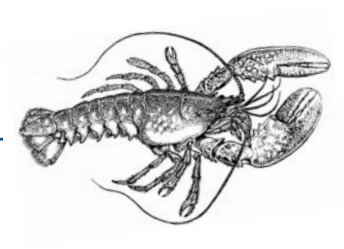
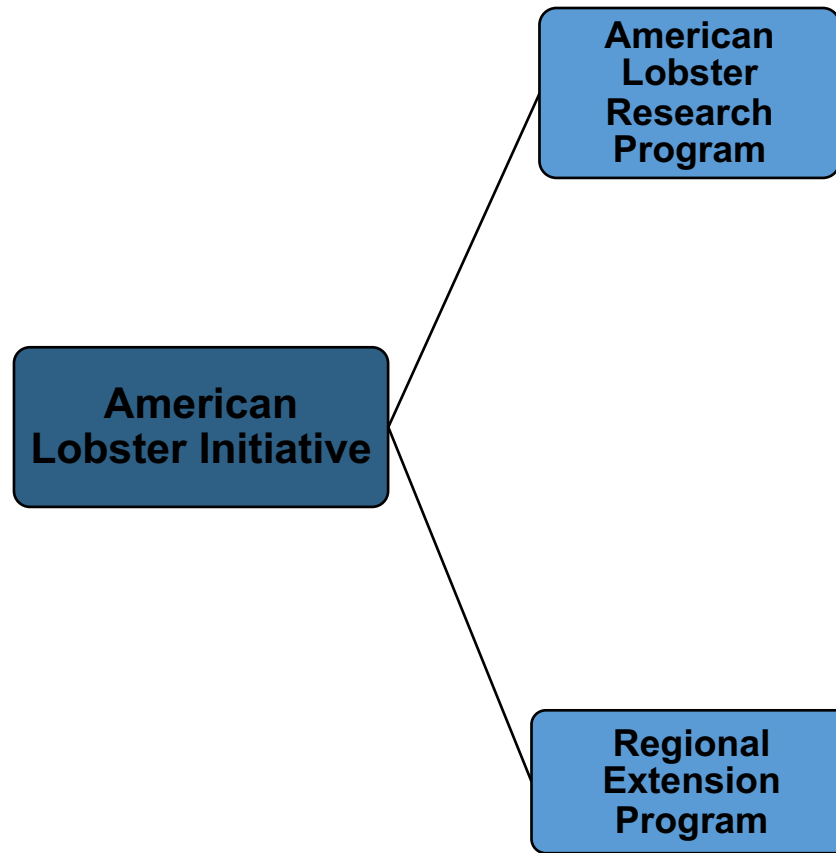
10:00-10:15	<i>Welcome and overview of ALI</i>
10:15-10:30	<i>Introductions to the Regional Extension Program</i>
10:30-10:40	<i>Q & A period</i>
10:40-11:30	<i>Breakout groups</i>
11:30-11:50	<i>Report back</i>
11:50-12:00	<i>Concluding remarks</i>

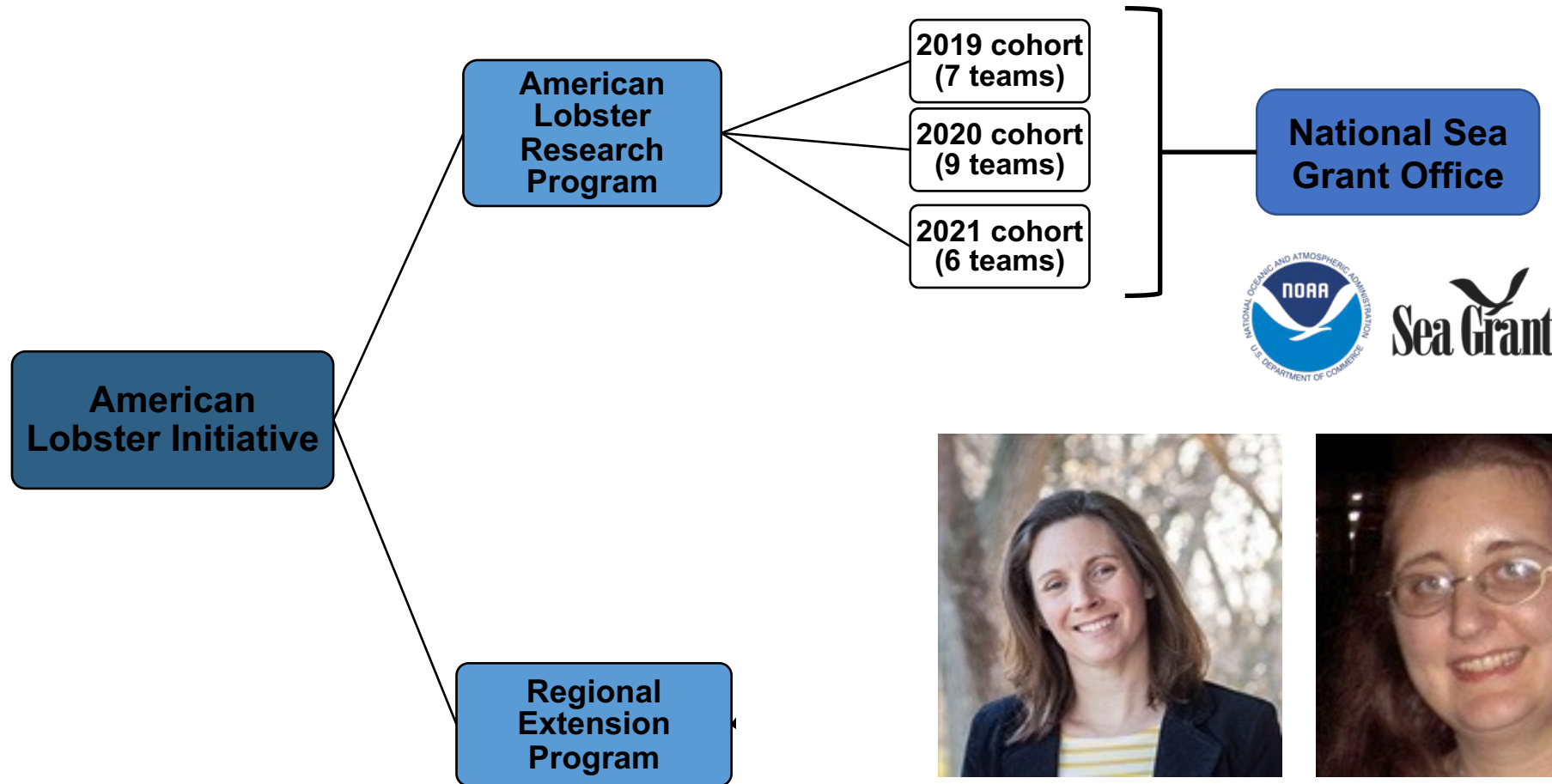


American
Lobster Initiative

Goal: Increase the American lobster industry's resilience to the biological, economic, and social impacts of ecosystem change in the Gulf of Maine, Georges Bank, and southern New England.







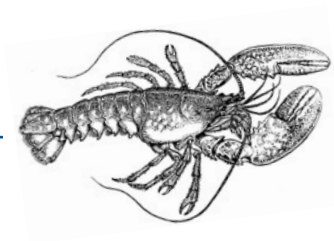
Alison Krepp

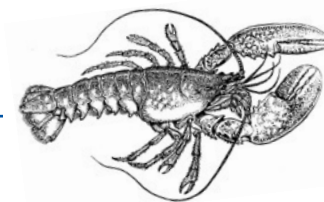
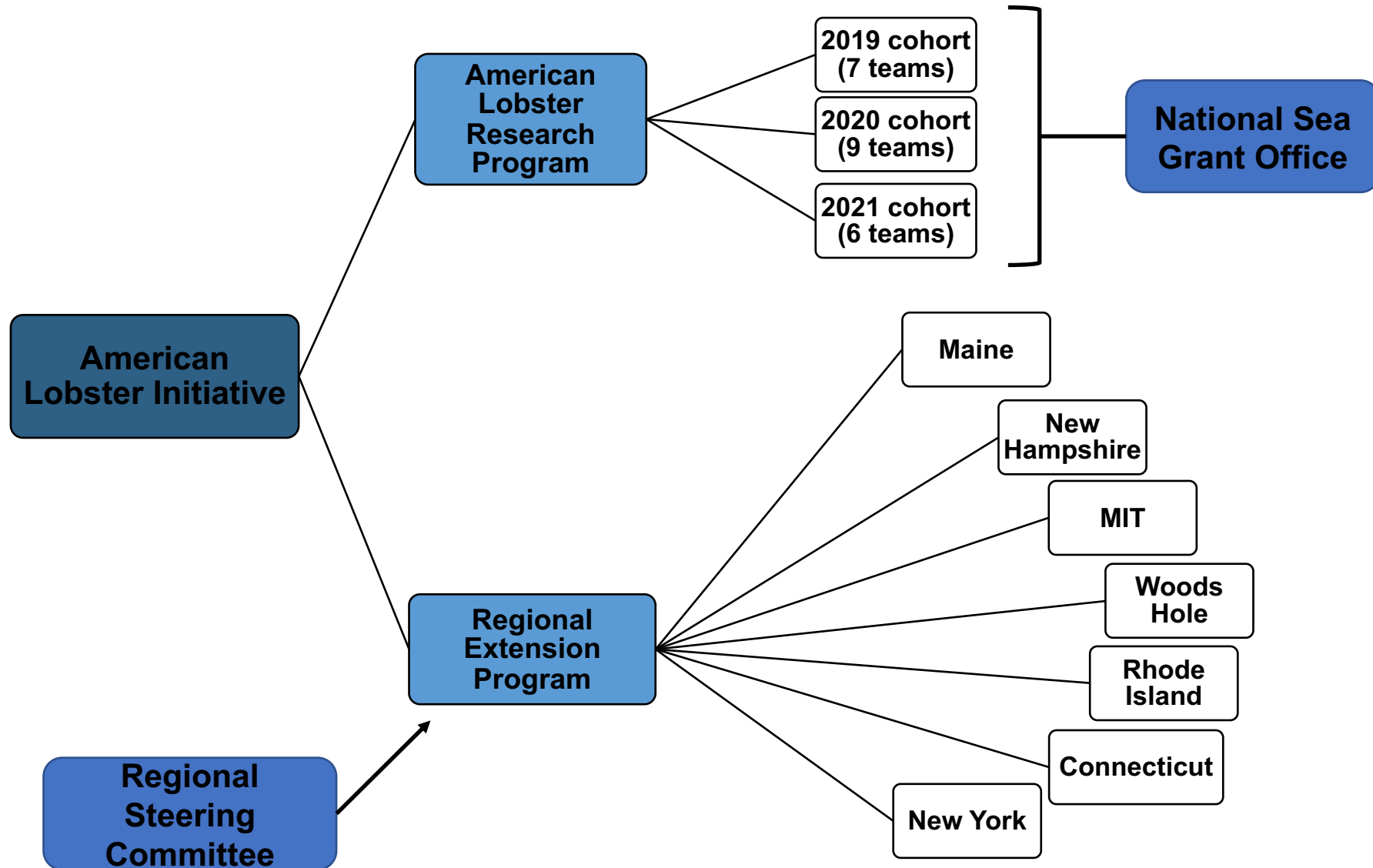
Alison.Krepp@noaa.gov



Elizabeth Diamond

Elizabeth.Diamond@noaa.gov





Maine Sea Grant

Home

Staff

About

Focus Areas

Funding

Extension

Education

Research

Donate!

American Lobster Initiative

ALI Home

Extension Projects

Research Projects

News

Resources

Collaborative Chats

Events

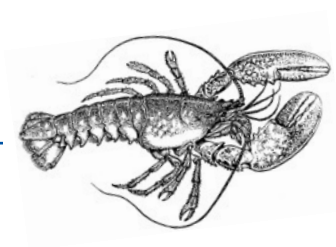
Contacts



Photo: Chris Bartlett

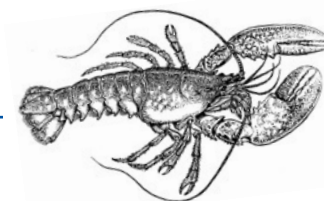


<https://seagrants.umaine.edu/extension/american-lobster-initiative/>



Goals for today

1. To foster conversations between people with similar or complimentary research projects.
2. To explore how researchers might leverage the Regional Extension Program to share their results.





New Hampshire Sea Grant



Extension Staff: Gabriela Bradt (gabriela.bradt@unh.edu)
Communications Staff: Alexa Brickett (alexa.brickett@unh.edu)

Expertise and ALI / RLEP Activities:

NH Local Seafood Finder StoryMap – undergoing an update:

<https://storymaps.arcgis.com/stories/448001c265f049e186baf63f9918a8b1>

Survey to lobster industry in NH (in collaboration with RI) to:

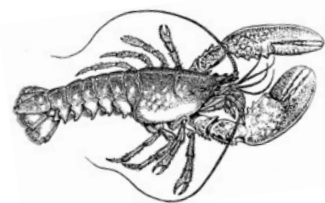
- Identify impacts of COVID pandemic on lobster industry
- Define benefits and challenges of dockside sales

Release Date: March 1, 2022

Plans to develop a survey data dashboard: June 2022

ALI Communications support (#SeaGrantLobster):

- Reviewing blog posts for ALI website
- Tracking media mentions, photos, articles, etc.





MIT Sea Grant

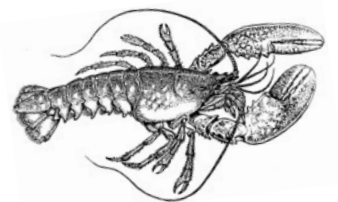


Extension Staff:

- Robert Vincent, Assistant Director for Advisory Services, rvincent@mit.edu
- Carolina Bastidas, Research Scientist, bastidas@mit.edu
- Lindsey Williams (now at NH Sea Grant), lindsey.williams@unh.edu

Expertise and ALI / RLEP Activities:

- Oral histories and industry surveys to better understand and document historic and current industry perspectives.
- Human dimensions of American lobster to develop a broad landscape view of traditional and non-traditional stakeholders in support of extension activities across research, management, and industry.
- Stakeholder engagement and technology development.





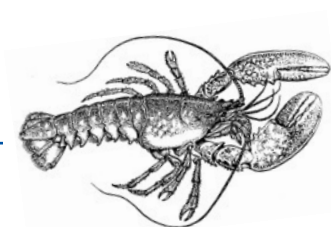
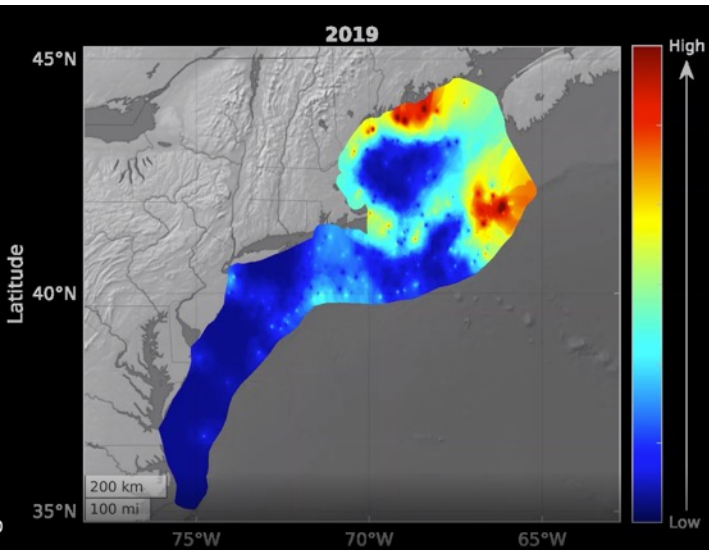
Woods Hole Sea Grant



Extension Staff: Jennie Rheuban (jrheuban@whoi.edu)

Expertise and ALI / RLEP Activities:

- Coastal biogeochemistry, climate change
- Recent lobster research StoryMap highlighting ALI (with Maine and MIT)
<https://storymaps.arcgis.com/stories/f50bd80b84d349048e9d814769dc29cd>
- Student support for expansion on research compilation highlighted in the StoryMap





Rhode Island Sea Grant

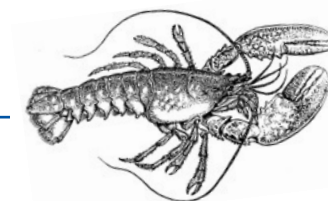


Extension Staff:

- Dawn Kotowicz (dkotowicz@uri.edu)
- Azure Cygler (ACygler@uri.edu)

Expertise and ALI / RLEP Activities:

- RI Seafood Finder map
<https://storymaps.arcgis.com/stories/e37880fdc24a4c7eb05b727ae228fe97>
 - Survey to lobster industry in RI (in collaboration with NH) to:
 - Identify reasons for lobstermen to try dockside sales
 - Define benefits and challenges of dockside sales
- Released December 9, 2021
- Student support - direct sales, blog, interviews





Connecticut Sea Grant



Extension Staff:

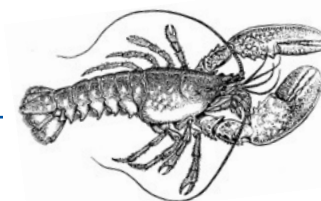
Nancy Balcom, Associate Director and Director of Extension, Connecticut Sea Grant
(Nancy.Balcom@uconn.edu)

Anoushka Concepcion, Associate Extension Educator, Connecticut Sea Grant
(Anoushka.Concepcion@uconn.edu)



Expertise and ALI / RLEP Activities: In collaboration with New York Sea Grant

- Contribute to the Oral Traditions Project (Long Island Sound)
 - Collect oral histories documenting history, fishing traditions and changes in fishery/resource from perspective of industry, resource managers and natural and social scientists
- Provide updates to Connecticut stakeholders through newsletter
- Collaborate with NY Sea Grant to hire consultants to review and synthesize American lobster research since 1999; prepare peer-reviewed journal submission
- Provide extension support as needed





New York Sea Grant



Extension Staff:

Antoinette Clemetson, Fisheries Specialist (aoc5@cornell.edu)

Expertise and ALI / RLEP Activities:

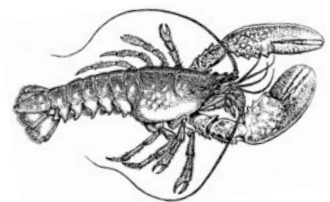
- Marine recreational fisheries and commercial fisheries disaster response extension support
- Joint programming with CTSG to coordinate
 - ALI oral history to capture experiences and perceptions from the 1999 LIS American lobster mass mortality, and shell disease epidemic in RI
 - Desk study synthesizing American lobster research over the past two decades (pending)
 - Facilitate periodic updates about ALI to NYS constituencies
 - Maintain bistate LIS American Research Initiative [webpage](#)



Richard A. French, UCONN



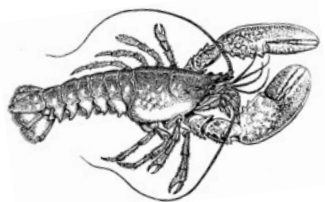
American Lobster Initiative



Maine Sea Grant

Affiliated Staff:

- Amalia Harrington, Marine Extension Associate, amalia.harrington@maine.edu
- Beth Bisson, Associate Director, beth.bisson@maine.edu
- Chris Bartlett, Marine Extension Associate, cbartlett@maine.edu
- Hannah Robbins, Communications Manager, hannah.robbins@maine.edu
- Jenny Spekhardt, IT Coordinator, petersj@maine.edu

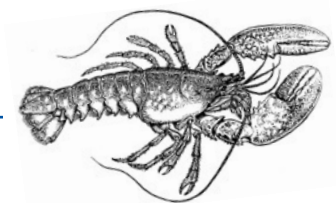




Maine Sea Grant

Expertise and ALI Activities:

- Lobster ecology, fisheries, community engagement, communications, website support
- Coordinating the regional extension program
- Outreach/engagement:
 - [Collaborative Chats](#) webinar series
 - [Research updates](#) with students and technicians
 - Collaborated on an interactive [StoryMap](#) highlighting ALI
 - Developing resources for industry-relevant issues
- Convened a special session at [RARGOM](#) to highlight research program
- Contributing to industry association meetings, Maine Fishermen's Forum, and meetings hosted by Maine DMR

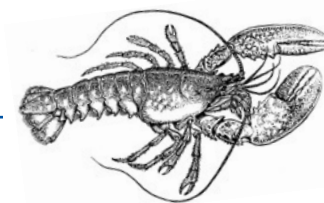




Questions?

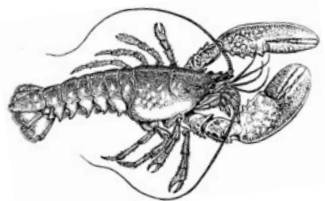


American Lobster Initiative



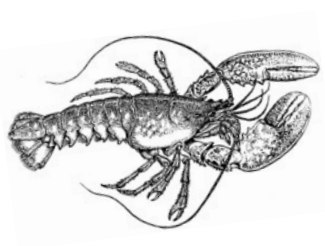
Breakout groups

Breakout Name	Facilitator	Note taker	Attendees
Larval studies/early life history, Group A	Amalia Harrington	Alexa Brickett	Eric Annis, Alex Ascher, Heidi Henninger, Emily Rivest, Carolyn Tepolt, Jessica Waller, Rick Wahle
Larval studies/early life history, Group B	Natalie Springuel	Gayle Zydlewski	Jeremy Collie, Abigail Sisti, Fraser Clark, Carl Wilson, Andrew Goode, Jesus Pineda, Paul Geoghegan
Ecosystem shifts	Chris Bartlett	Hannah Robbins	Josh Carloni, Jon Grabowski, Colleen Giannini, Erik Chapman, Brittany Jellison, Allison Murphy, Rebecca Peters
Lessons learned from SNE	Antoinette Clemetson	Anouska Concepcion	Theresa Burnham, Yong Chen, Aubrey Ellertson, Ben Gutzler, Kathy Mills, Tracy Pugh, Jeff Shields
Species interactions	Katherine Bunting-Howarth	Beth Bisson	Elija Bates, Pat Augustine, Helen Cheng, Brian Cheng, Jason Goldstein, Marissa McMahan, Conor McManus
Socioeconomic impacts of change	Nancy Balcom	Azure Cygler	Katherine Maltby, Patrice McCarron, Marianna Rampaul, Burton Shank, Joshua Stoll, Alison Krepp, Kanae Tokunaga
Modeling and/or forecasting	Jennie Rheuban	Elizabeth Diamond	Damian Brady, Beth Casoni, Cameron Hodgdon, Noah Khalsa, Jeff Kipp, Kim McKown, Smit Vasquez Caballero
Alternative baits	Gabby Bradt	Dawn Kotowicz	Jynessa Dutka-Gianelli, Adrian Jordaan, Rob Vincent, Steven Jury, Kathleen Reardon, Win Watson, Annie Tselikis



Poll for next steps

1. Are you interested in attending targeted, small-group meetings?
2. If yes, which topics would you be interested in (**pick any/all**)?
3. Would you be interested in workshops focused on other topics (**pick any/all**)?



Concluding remarks

- Look for follow-up based on breakouts and the polling results
- Will share slide deck/contact information across ALI
- Please reach out to the Extension Program:

<https://seagrants.unh.edu/extension/american-lobster-initiative/contacts/>

Thank you!



American Lobster Initiative

